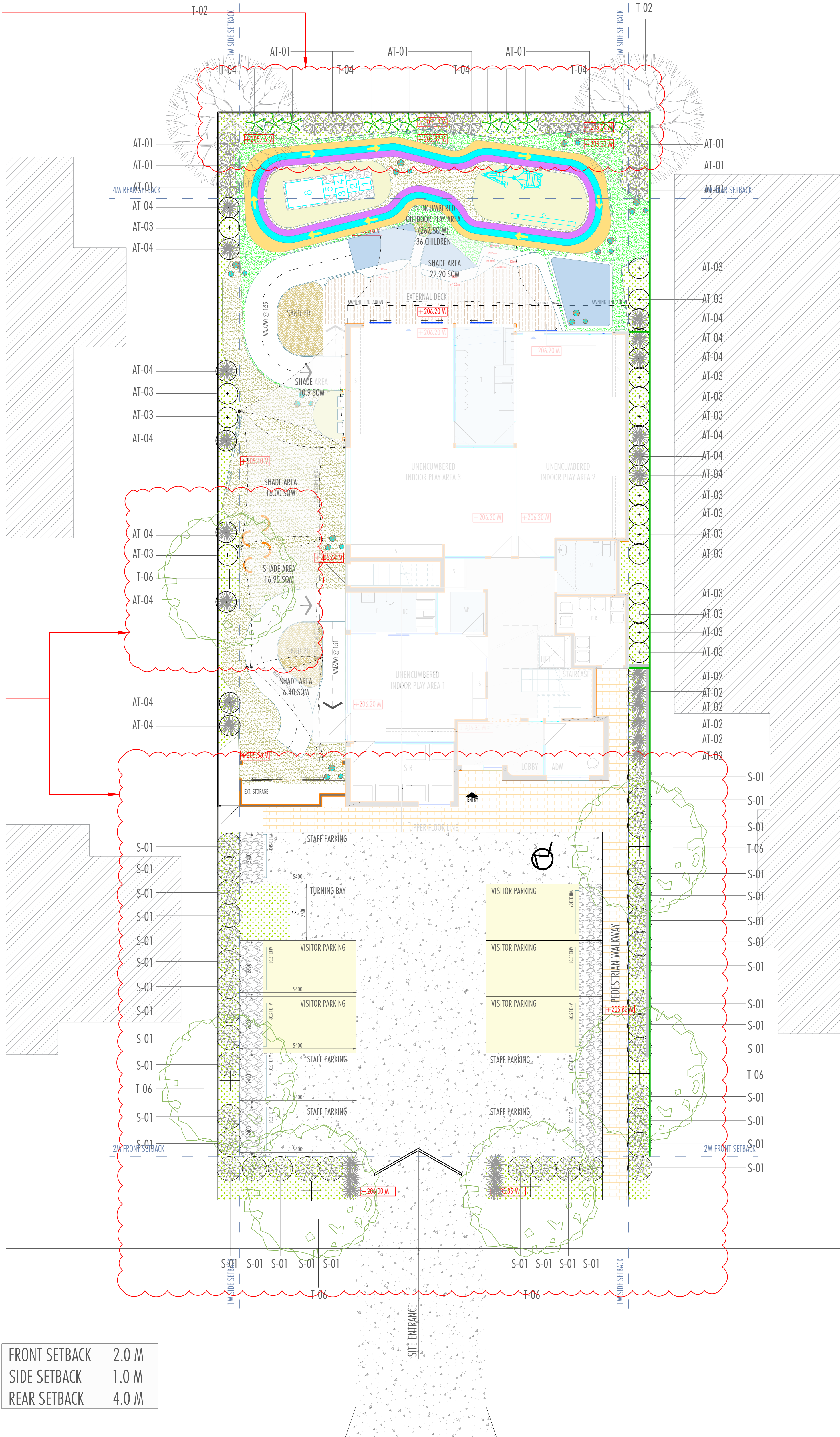


TREES UPDATED AND ANNOTATED IN OUTDOOR  
PLAY AREA.

TREES UPDATED AND ANNOTATED IN OUTDOOR  
PLAY AREA.



LEGEND AND SCHEDULE UPDATED

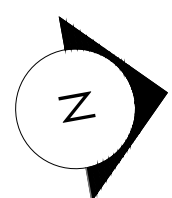
- LEGEND**
- OUTDOOR PLAY AREA (Ground Floor)**  
267 SQM (36 CHILDREN)
- SITE BOUNDARY
  - GROUND COVER PLANTING (REFER PLANT SCHEDULE)
  - PROPOSED TURF - OUTDOOR PLAY AREA
  - PROPOSED SAND PIT
  - SOFT FALL WOOD CHIPS
  - PROPOSED SYNTHETIC SOFT FALL ON OUTDOOR PLAY AREA
  - PROPOSED SYNTHETIC SOFT RUNNING FALL TRACK
  - HOP SCOTCH AREA
  - PEDESTRIAN ACCESS
  - TIMBER DECKING
  - VEHICULAR ACCESS
  - ACOUSTIC FENCING
  - T-02 LEMON SCENTED MYRTLE (REFER PLANT SCHEDULE)
  - T-04 LILLY PILLY (REFER PLANT SCHEDULE)
  - T-06 CRAB APPLE (REFER PLANT SCHEDULE)
  - S-01 DWARF LILLY PILLY (REFER PLANT SCHEDULE)
  - AT-01 JASMINE (REFER PLANT SCHEDULE)
  - AT-02 CORDYLINE CABERNETT (REFER PLANT SCHEDULE)
  - AT-03 PINK JOY (REFER PLANT SCHEDULE)
  - AT-04 BRONZE BABY FLAX (REFER PLANT SCHEDULE)
  - AT-05 LILY TURF (REFER PLANT SCHEDULE)
  - PROPOSED SHADE STRUCTURE OVER OUTDOOR PLAY AREA
  - PLAY WALLS
  - PAINTING EASELS
  - SEATINGS
  - GATE

FRONT SETBACK 2.0 M  
SIDE SETBACK 1.0 M  
REAR SETBACK 4.0 M

HALLORAN STREET

PROPOSED CHILDCARE CENTER  
32 HALLORAN STREET, TURVEY PARK

G R O U N D  
F L O O R P L A N



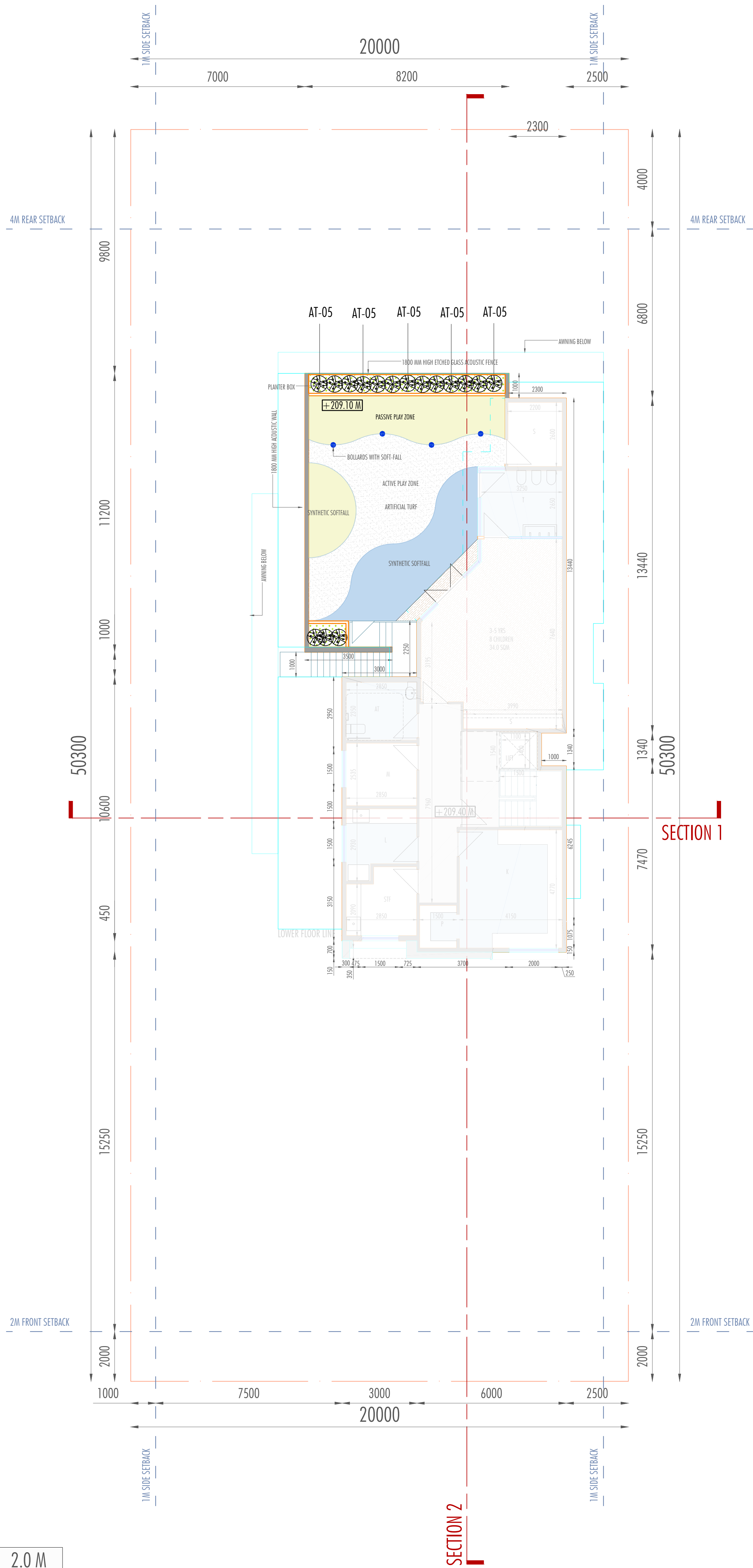
**ARCHIDROME**  
206, 8 HELP STREET, CHATSWOOD NSW 2067 TARUNCHADHA@ARCHIDROME.NET ARCHITECT'S REG. NO. 8777

DRWG. NO.  
L01  
R-03

SCALE 1:100 @ A1

18/09/2023



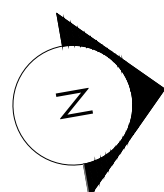


#### LEGEND

- OUTDOOR PLAY AREA  
273.9 SQM (38 CHILDREN)
- SITE BOUNDARY
  - GROUND COVER PLANTING (REFER PLANT SCHEDULE)
  - PROPOSED TURF - OUTDOOR PLAY AREA
  - PROPOSED TURF - OUTDOOR PLAY AREA
  - PROPOSED SAND PIT
  - SOFT FALL WOOD CHIPS
  - PROPOSED SYNTHETIC SOFT FALL ON OUTDOOR PLAY AREA
  - PROPOSED SYNTHETIC SOFT RUNNING FALL TRACK
  - HOP SCOTCH AREA
  - PEDESTRIAN ACCESS
  - TIMBER DECKING
  - VEHICULAR ACCESS
  - ACOUSTIC FENCING
  - T-02 LEMON SCENTED MYRTLE (REFER PLANT SCHEDULE)
  - T-04 LILLY PILLY (REFER PLANT SCHEDULE)
  - T-06 CRAB APPLE (REFER PLANT SCHEDULE)
  - S-01 DWARF LILLY PILLY (REFER PLANT SCHEDULE)
  - AT-01 JASMINE (REFER PLANT SCHEDULE)
  - AT-02 CORDYLINE CABERNETT (REFER PLANT SCHEDULE)
  - AT-03 PINK JOY (REFER PLANT SCHEDULE)
  - AT-04 BRONZE BABY FLAX (REFER PLANT SCHEDULE)
  - AT-05 LILY TURF (REFER PLANT SCHEDULE)
  - PROPOSED SHADE STRUCTURE OVER OUTDOOR PLAY AREA
  - PLAY WALLS
  - PAINTING EASELS
  - SEATINGS
  - GATE

FRONT SETBACK	2.0 M
SIDE SETBACK	1.0 M
REAR SETBACK	4.0 M

## FIRST FLOOR PLAN



**ARCHIDROME**  
206, 8 HELP STREET, CHATSWOOD NSW 2067 TARUNCHADHA@ARCHIDROME.NET ARCHITECTS REG. NO. 8777

DRWG. NO.  
**L02**  
R-03

LANDSCAPE SCHEDULE

---



TREE SCHEDULE - BROADLEAF

BAC | Backhousia citriodora– Lemon Scented Myrtle  
code T-02

Backhousia citriodora is a flowering plant in the family Myrtaceae, genus Backhousia. It is endemic to subtropical rainforests of central and south-eastern Queensland, Australia, with a natural distribution from Mackay to Brisbane. It makes a useful shade tree and can be used for hedging and screening where the strong lemony scented leaves makes trimming a sensory pleasure. Can be grown in coastal areas.

THOUGHT : This Tree reflects a strong sense of smell. Planting it in a childcare could tickle the senses and expose kids to nature.



CODE	BOTANICAL NAME	COMMON NAME	POT SIZE	MATURE HEIGHT
BAC	Backhousia citriodora	Lemon Scented Myrtle	45L	8m



TREE SCHEDULE - BROADLEAF

ACS| ACMENA SMITHII – LILLY PILLY  
code T-04

Acmena smithii is a summer-flowering, winter-fruiting evergreen tree, belonging to the myrtle family Myrtaceae. It shares the common name "lilly pilly" with several other plants. Can be used as a feature tree. Great for screening low height - high density.

THOUGHT : This Tree has a very dense nature, yet it is small. It could potentially add character to the space since it also flowers.



CODE	BOTANICAL NAME	COMMON NAME	POT SIZE	MATURE HEIGHT
ACS	Acmena smithii	Lilly pilly	45L	8m

TREE SCHEDULE - BROADLEAF

MFL |Malus floribunda - Crab Apple  
code T-06

A very attractive tree when in full bloom with masses of white and reddish-pink flowers in spring. An attractive focal point for gardens and parks where there is space for the tree to attain its natural form. Tolerates warmer areas well.

THOUGHT: This tree reflects a strong sense of seasonal changes. Planting it in a childcare could weave children growth to nature. Can also add a playful nods to the landscape.



CODE	BOTANICAL NAME	COMMON NAME	POT SIZE	MATURE HEIGHT
MFL	Malus floribunda	Crab Apple	45L	3m

TREE SCHEDULE – SCREENING AND BARRIER SHRUBS

Acs | Acmena smithii var.minor – Dwarf Lilly pilly  
code S-01

Dwarf Lilly Lilly is a native Australian hedging & screening plant, with small leaves and a dwarf growing habit that is denser and more compact than standard Lilly Pillies. This means it won’t grow taller than 3 meters, making it perfect for a smaller hedge that you want to trim less. Hardy evergreen with glossy leaves, which are red when young and then turn a dark green.

THOUGHT : This Tree has a very dense nature, yet it is small. It could potentially add character to the space since it flowers during summer.



CODE	BOTANICAL NAME	COMMON NAME	POT SIZE	MATURE HEIGHT
Acs	Acmena smithii var.minor	Dwarf Lilly pilly	25L	3m

TREE SCHEDULE – ACCENT PLANTS

Jas| Jasminum – Jasmine  
code AT-01

Jasmine is a genius of shrubs and vines in the olive family. Jasmines are widely cultivated for the characteristic fragrance of their flowers.

Thought : Using it in childcare can diversify their sense of smell. A certain smell takes you back to those times when you were young? It is strongly associated to memory.



CODE	BOTANICAL NAME	COMMON NAME	POT SIZE	MATURE HEIGHT
Jas	Jasminum	Jasmine	600mm	2m



TREE SCHEDULE – ACCENT PLANTS

Cac| Cordyline australis ‘Cabernett’ – Cordyline Cabernett  
code AT-02

Cordyline Cabernett is a stunning new architectural plant. Cabernett will grow to approximately 2 meters in height and with its mainly multi stemmed habit can be approximately 1.5 meters wide. The plant features wonderful foliage colored just like a Cabernet red wine. This foliage is sword shaped and can reach lengths of 1.5 meters. After time, in summer, Cabernett blooms with white to cream flowers.

Thought : Using these in childcare can strongly contrast the greens and add character to the landscape.



CODE	BOTANICAL NAME	COMMON NAME	POT SIZE	MATURE HEIGHT
Cac	Cordyline australis 'Cabernett'	Cordyline Cabernett	200mm	1.2m

TREE SCHEDULE – ACCENT PLANTS

Cpj| Cordyline ‘Pink Joy’ – Pink Joy Cordyline  
code AT-03

An attractive palm type shrub or small tree with arching leaves, long and sword shaped. Cordylines can produce clusters of scented flowers in the summer. There are lots of varieties, some of which can grow to 8 meters tall. Pull off dead leaves as soon as they die to keep the plant looking good and to prevent disease. 'Pink Joy' has multi-colored leaves and foliage in shades of Pink, Grey and Green.

Thought :Using these in childcare can strongly contrast the greens and add character to the landscape.



CODE	BOTANICAL NAME	COMMON NAME	POT SIZE	MATURE HEIGHT
Cpj	Cordyline'Pink Joy'	Pink Joy Cordyline	150mm	1.2m



TREE SCHEDULE – ACCENT PLANTS

Phbb| Phormium ‘Bronze Baby’ – Bronze Baby Flax  
code AT-04

Compact growing flax featuring copper colored foliage which is gently arching. Bronze-red flower spikes appear during summer.  
For a tropical look, plant as a border in seaside gardens, rockeries and formal gardens

Thought : Using these in childcare can strongly contrast the greens and add character to the landscape.



CODE	BOTANICAL NAME	COMMON NAME	POT SIZE	MATURE HEIGHT
Phbb	Phormium'Bronze Baby'	Bronze Baby Flax	200mm	0.8m

TREE SCHEDULE – ACCENT PLANTS

Lim| Liriope muscari variegata – variegata Lily Turf  
code AT-05

Variegated, glossy green strappy leaved perennial growing to approx 30cm tall. Clumps expand slowly and are not invasive. Purple flower spikes sit above the foliage in late summer, followed by black coloured berries in winter. Mass plant as a lawn alternative, drift through borders, use in containers and edge pathways with tough little plant.

THOUGHT: In childcare this shrub can add colours in the landscape, sensitively driven by design.



CODE	BOTANICAL NAME	COMMON NAME	POT SIZE	MATURE HEIGHT
Lim	Liriope muscari ' Variegata'	Variegata Lily Turf	150mm	0.3m