

# Service Review Attachment D

## **Wagga Wagga City Council Organisational Structure**

30 August 2024

# WAGGA WAGGA CITY COUNCIL

(ORGANISATIONAL STRUCTURE AS AT AUGUST 2024)

## REGIONAL ACTIVATION DIRECTORATE John Sidgwick

## COMMUNITY DIRECTORATE Janice Summerhayes

## GOVERNANCE DIRECTORATE Peter Thompson

## CITY ENGINEERING DIRECTORATE Warren Faulkner

## INFRASTRUCTURE SERVICES DIRECTORATE Henry Pavitt (Acting)

- **City Growth & Regional Assets**
  - Economic Development
  - Recreation & Asset Planning
  - Oasis Regional Aquatic Centre
- **Strategic Planning & Contributions**
- **Land & Property**
- **Commercial Businesses**
  - Gregadoo Waste Management Centre (GWMC)
  - Livestock Marketing Centre (LMC)

- **Community Services**
  - Art Gallery & National Art Glass Gallery
  - Museum of the Riverina
  - Civic Theatre
  - Wagga Wagga City Library
  - Social Planning
  - Events & Visitor Economy
- **Environment & Regulatory Services**
  - Biodiversity / Natural Resource Management
  - Environment Education
  - Environmental Compliance
  - Weeds Management
  - Regulatory Services
  - Animal Shelter Services
  - Public Health Education & Compliance

- **Audit**
- **Development Assessment & Building Certificate Division**
- **RiFL**
- **Airport**

### PEOPLE & CULTURE Fiona Piltz

- **Work Health & Safety**
- **Learning & Development**
- **Recruitment & Onboarding**
- **Workplace Relations**
- **Workforce Initiatives**

### CHIEF FINANCIAL OFFICE Carolyn Rodney

- **Financial Accounting**
- **Management Accounting**
- **Revenue**
- **Accounts Payable**
- **Accounts Receivable**
- **Payroll**
- **Procurement**
- **Strategic Asset Management**

### CHIEF OPERATING OFFICE Scott Gray

- **Corporate Governance & Performance**
- **Executive Support**
- **Communications & Engagement**
- **Information Technology**
- **Customer Service**
- **Records**
- **Corporate Strategy**

- **Engineering Services**
- **Design Services**
- **Strategic Assets**
- **Flood Plain Management**
- **Subdivisions**
- **Traffic**
- **City Strategy**
  - Sewer
  - Stormwater
  - Roads
  - Community Infrastructure

- **Sewer & Stormwater Operations**
  - Sewer
  - Stormwater
  - Sewage Treatment Plants
- **Civil Operations**
  - Condition Assessment/Analysis
  - Roads
  - Footpaths
  - Kerb & Gutter
- **Parks & Strategic Operations**
  - Parks & Gardens
  - Sportsgrounds
  - Open Space
  - Zoo & Aviary
  - Cemetery
- **Plant, Fleet & Buildings**
  - Workshop
  - Facilities Management/Maintenance
  - Fleet Services
  - Stores

Structure at 30 August 2024

# DEVELOPMENT ASSESSMENT & BUILDING CERTIFICATION DIVISION

MANAGER
SUPERVISOR
TEMP/CASUAL EMPLOYEE

MANAGER DEVELOPMENT ASSESSMENT & BUILDING CERTIFICATION  
Vacant

DEVELOPMENT ASSESSMENT COORDINATOR

PLANNING ADMINISTRATION COORDINATOR

BUILDING CERTIFICATION COORDINATOR

SENIOR TOWN PLANNER

CADET TOWN PLANNER

SENIOR TOWN PLANNER

TOWN PLANNER

SENIOR TOWN PLANNER

TOWN PLANNER

SENIOR TOWN PLANNER

TOWN PLANNER  
Vacant

CADET TOWN PLANNER

TOWN PLANNER  
Vacant

DEVELOPMENT ADMINISTRATION OFFICER

DEVELOPMENT ADMINISTRATION OFFICER

DEVELOPMENT ADMINISTRATION OFFICER

DEVELOPMENT ADMINISTRATION OFFICER

DEVELOPMENT ADMINISTRATION OFFICER

DEVELOPMENT ADMINISTRATION OFFICER

DEVELOPMENT ADMINISTRATION OFFICER

DEVELOPMENT ADMINISTRATION OFFICER

DEVELOPMENT ADMINISTRATION OFFICER

BUSINESS SUPPORT OFFICER

BUILDING SURVEYOR

CADET BUILDING SURVEYOR

BUILDING SURVEYOR

BUILDING SURVEYOR

BUILDING SURVEYOR  
Vacant

CADET BUILDING SURVEYOR

Note: some temp roles have ongoing funding in budget.

# DEVELOPMENT ASSESSMENT & BUILDING CERTIFICATION DIVISION

Proposed – September 2024

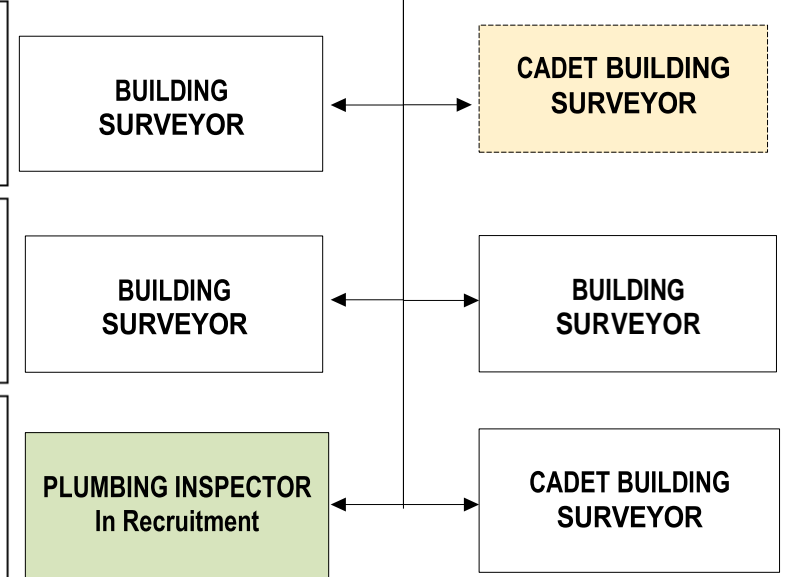
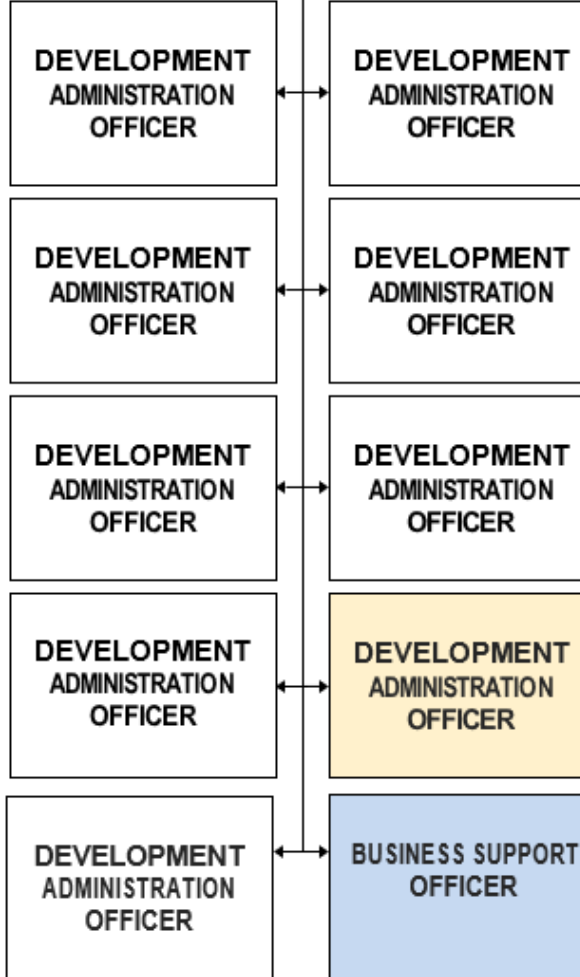
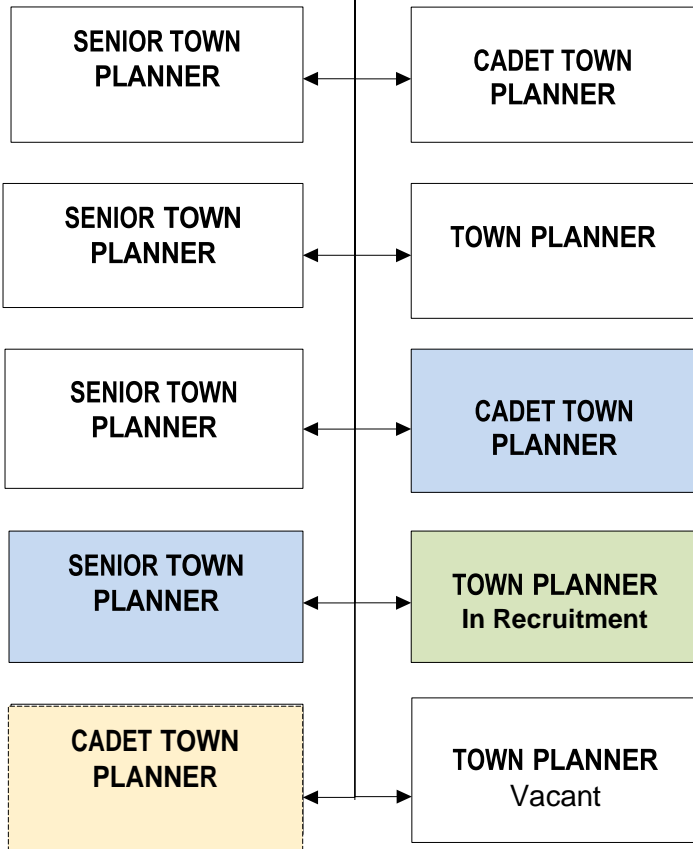
MANAGER
SUPERVISOR
TEMPORARY
IN RECRUITMENT
PILOT CONCIERGE

MANAGER DEVELOPMENT ASSESSMENT & BUILDING CERTIFICATION  
Vacant

DEVELOPMENT ASSESSMENT  
COORDINATOR

PLANNING ADMINISTRATION  
COORDINATOR

BUILDING CERTIFICATION  
COORDINATOR



PILOT CONCIERGE – these roles will be used to establish and trial a ‘front-end’ concierge service. Review within six months to establish ongoing roles required with Customer Service  
 PLUMBING INSPECTOR – using vacant building surveyor role for this service